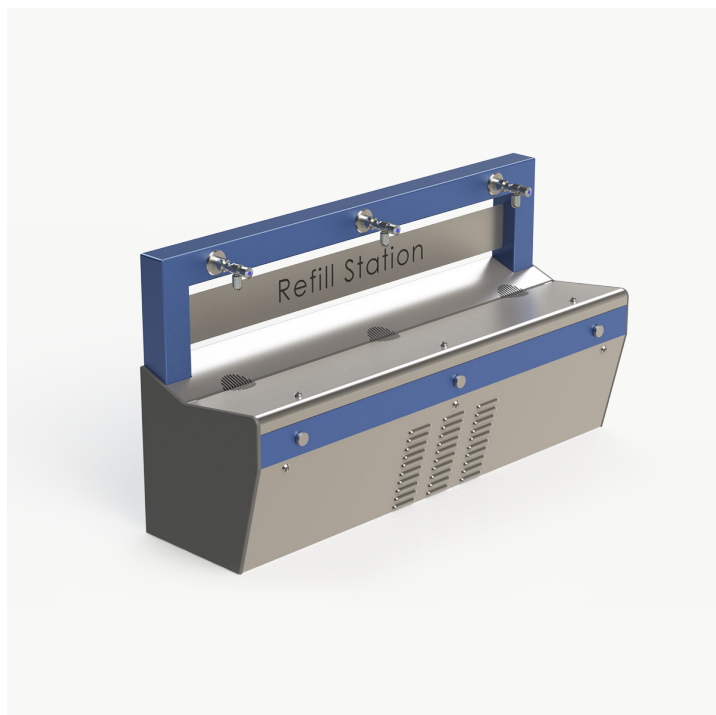
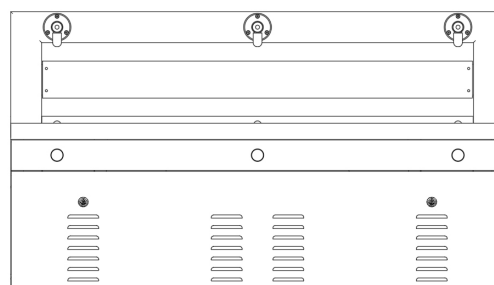
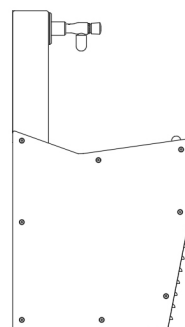


# ARCHITECTURAL FOUNTAINS | CF400 CHILLED OUTDOOR DRINKING FOUNTAIN | SPECIFICATION SHEET

urban  
+ Fountains  
+ Furniture



\*Model shown includes optional signage



## MODEL

**Model:** CF400 Chilled Outdoor Drinking Fountain

**SKU:** DFCF400

## DIMENSIONS

**Total Height:** 951mm

**Width:** 1624mm

**Depth:** 497mm

## CERTIFICATIONS



## FEATURES

- + Stainless Steel Modular Construction
- + 3x Bottle Filler
- + 3x Drinking Bubblers
- + 316 S/S Trough and Fixings
- + 72L/hour chilling capacity
- + Easy Activated push buttons
- + Wall Mounted (height can vary to suit requirements)
- + Floor Mounted (most suitable for Primary school)
- + 240V Electrical supply
- + Australian Made
- + Vandal resistant
- + Easy Installation

## OPTIONS

- + Available in 2 tap or single tap units
- + Different Powder coated colour options for Top Frame
- + Optional Signage or Logo Panel with branding
- + Sensor activated Bubblers

## POPULAR COLOURS



COAST



STORM



DESERT



FLAME



LEAF



EVERGREEN



MONUMENT



STAINLESS STEEL